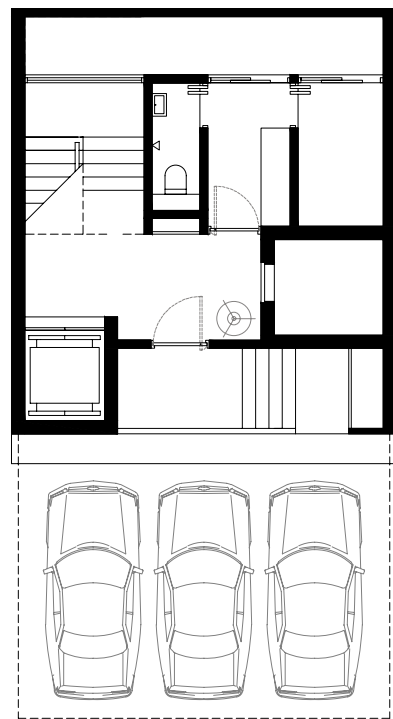
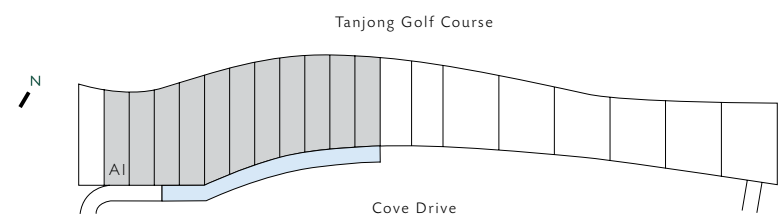




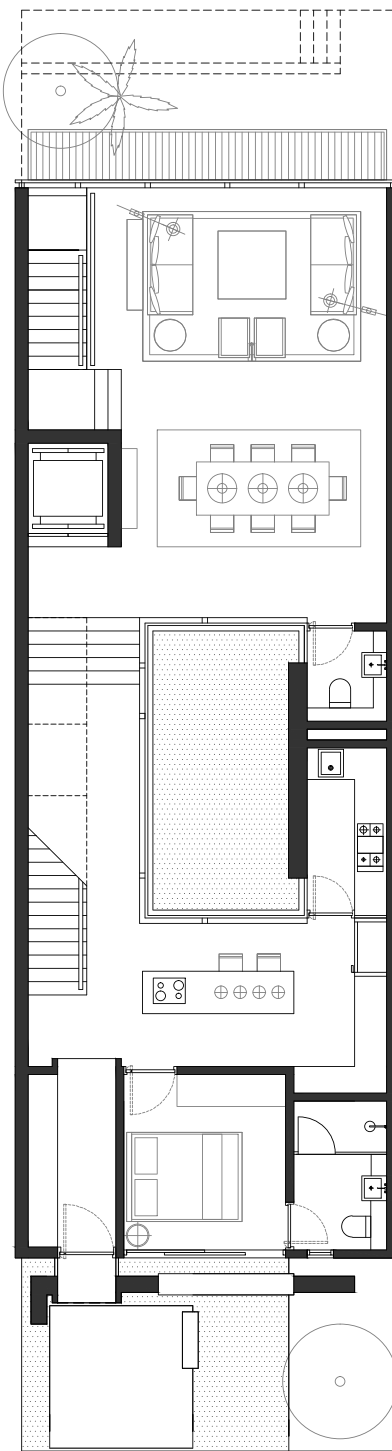
THE GREEN COLLECTION

GOLF VILLAS BY ELEVATION

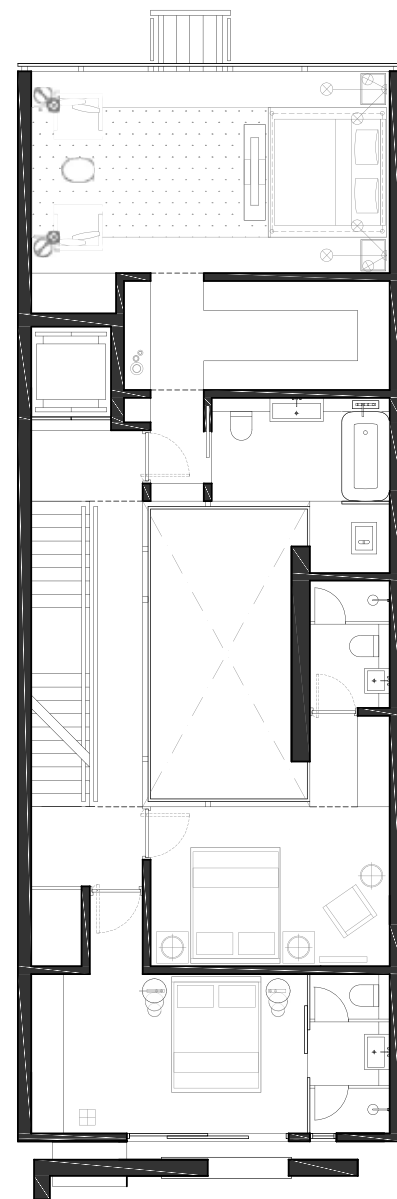
UNIT PLANS



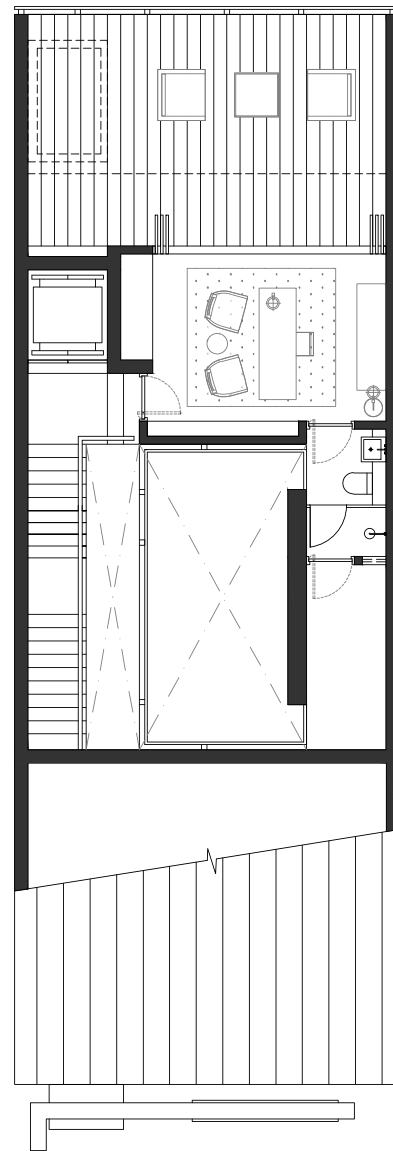
BASEMENT



1ST FLOOR

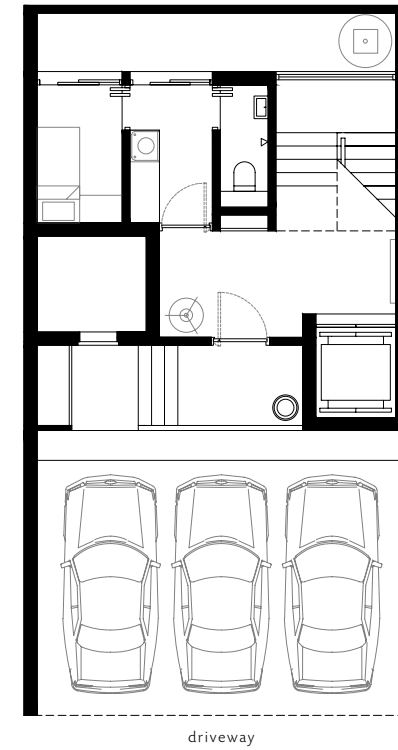


2ND FLOOR

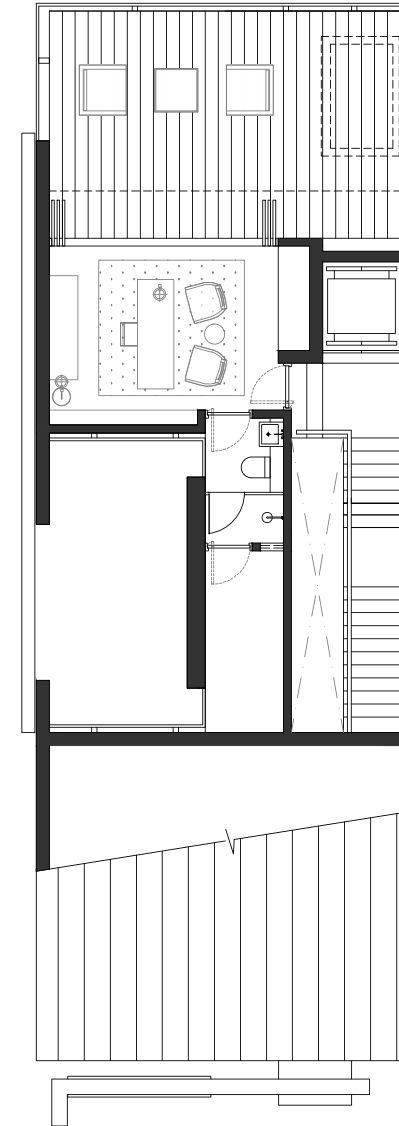
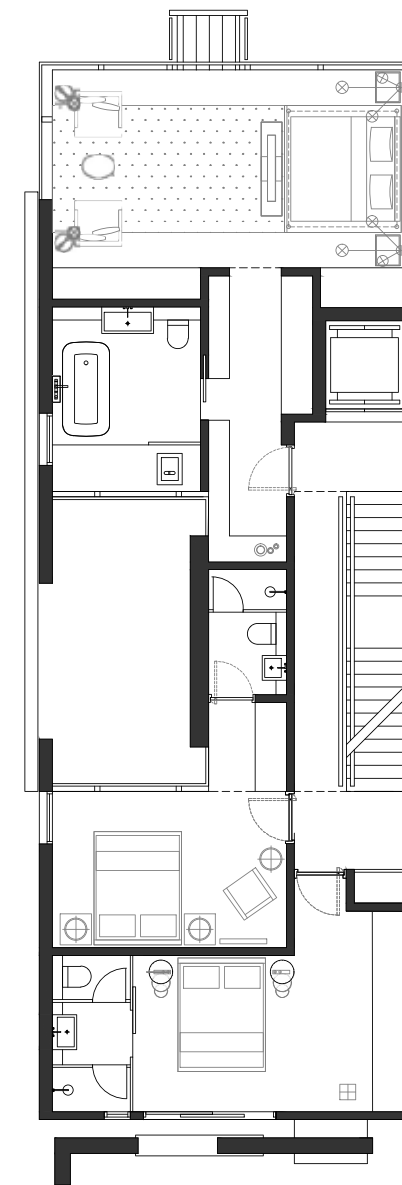
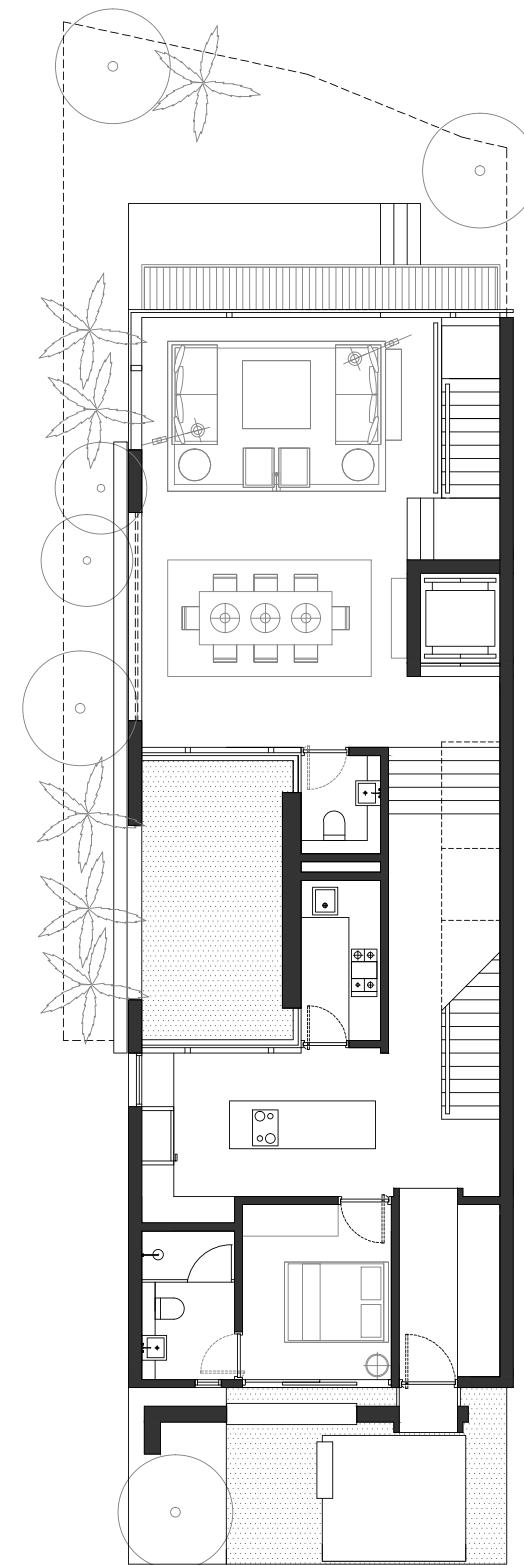


ATTIC

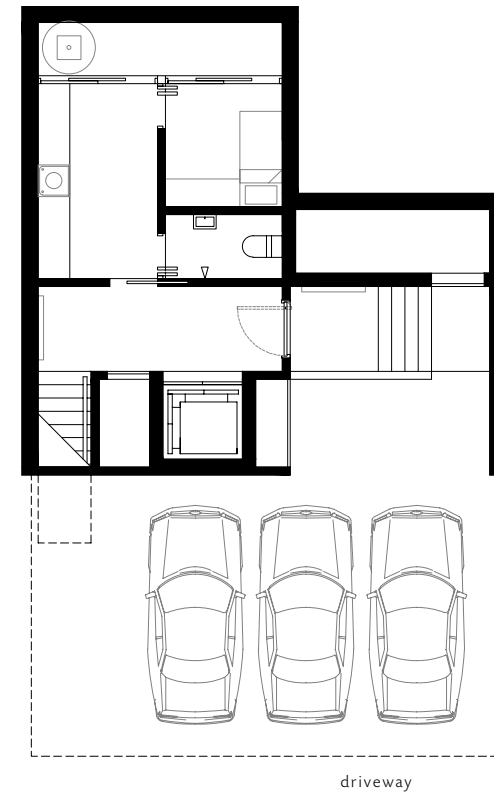
TYPE A1



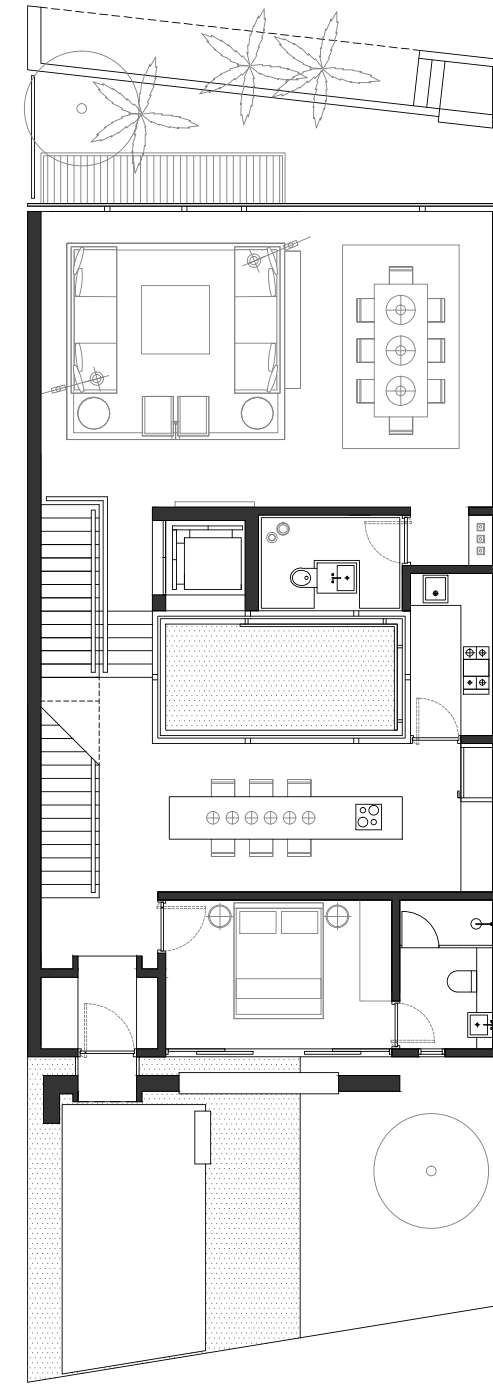
BASEMENT



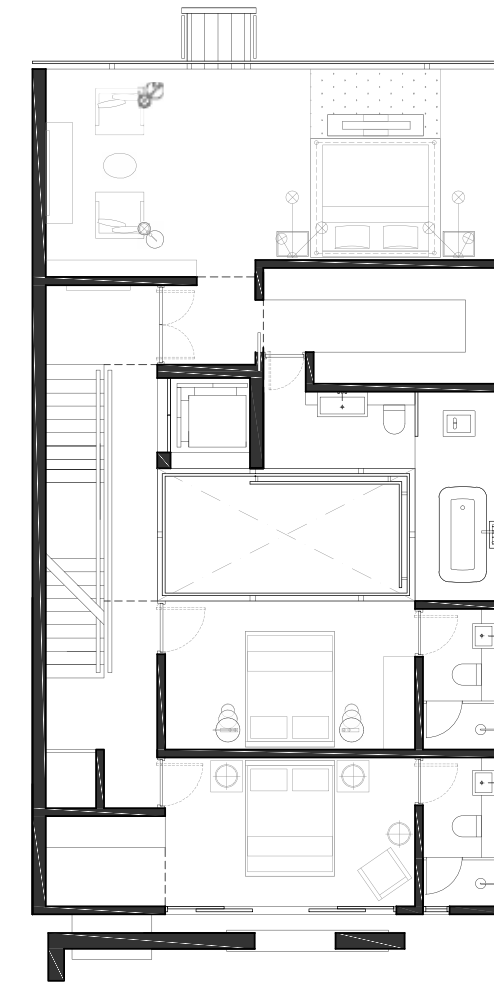
TYPE A2



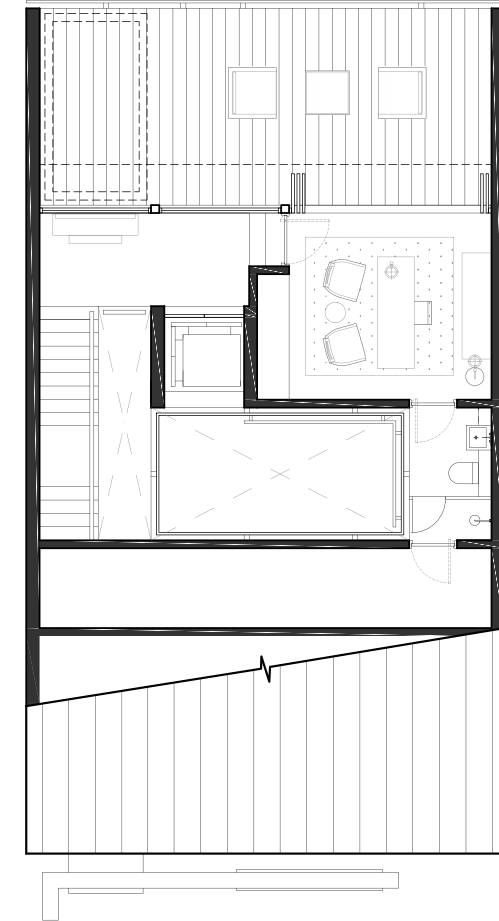
BASEMENT



1ST FLOOR

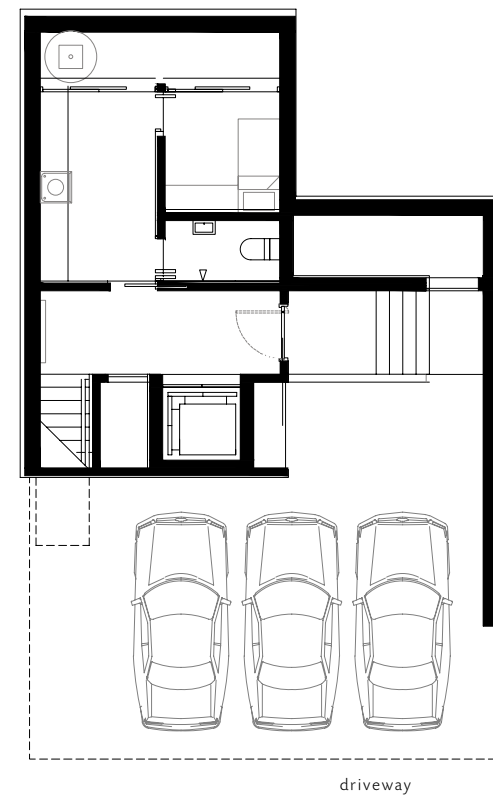
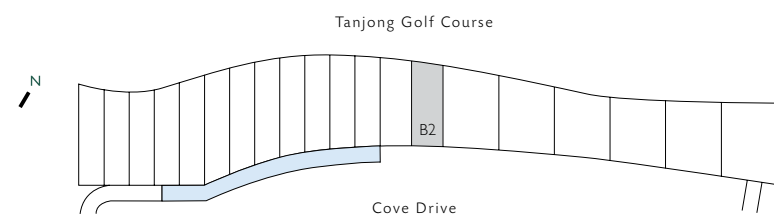


2ND FLOOR

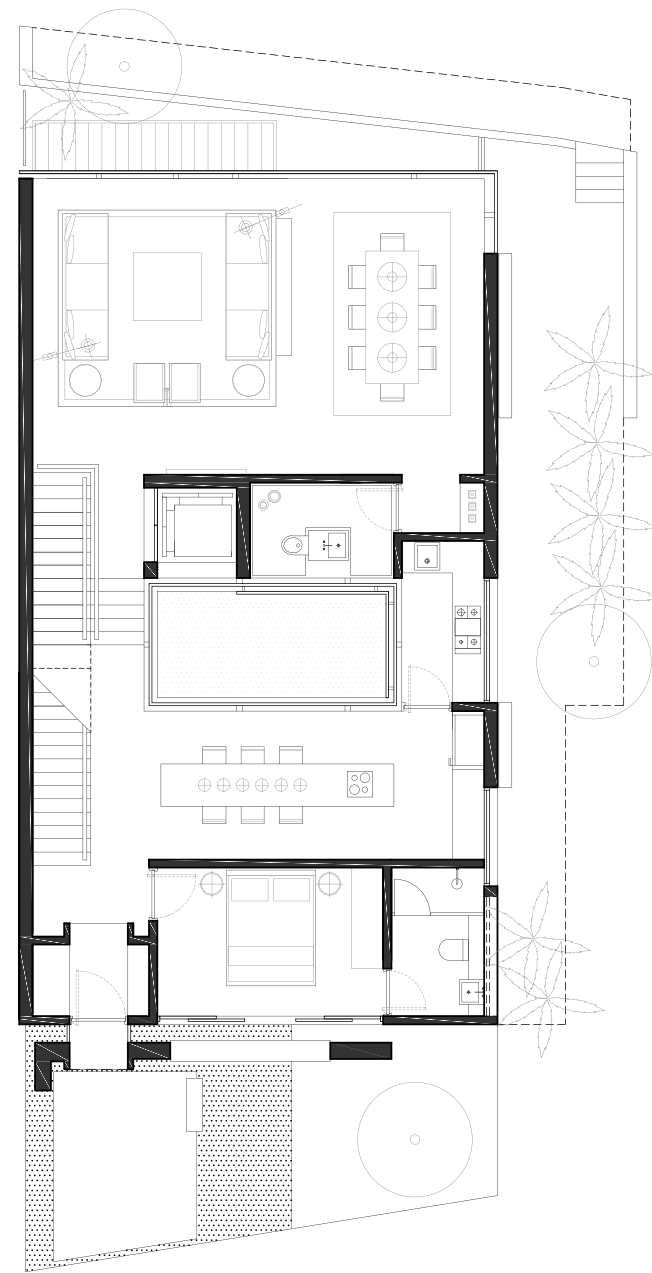


ATTIC

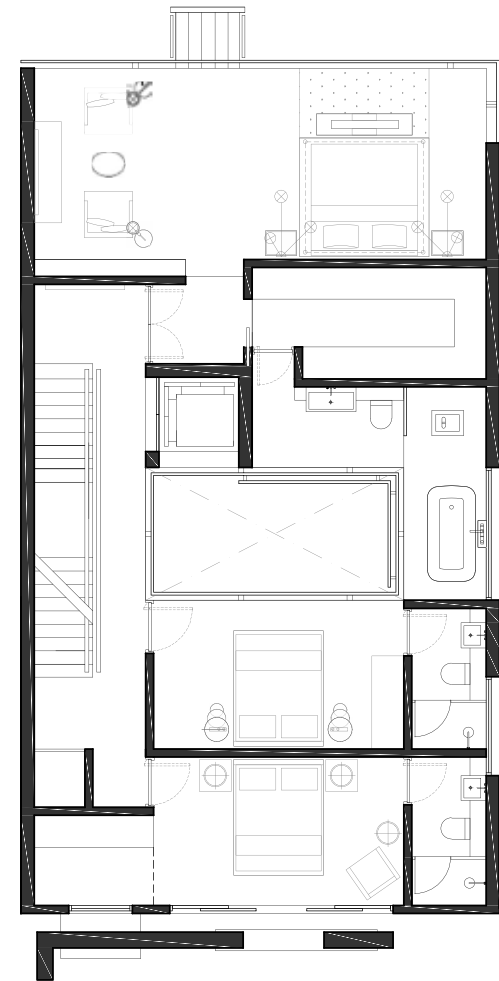
TYPE B1



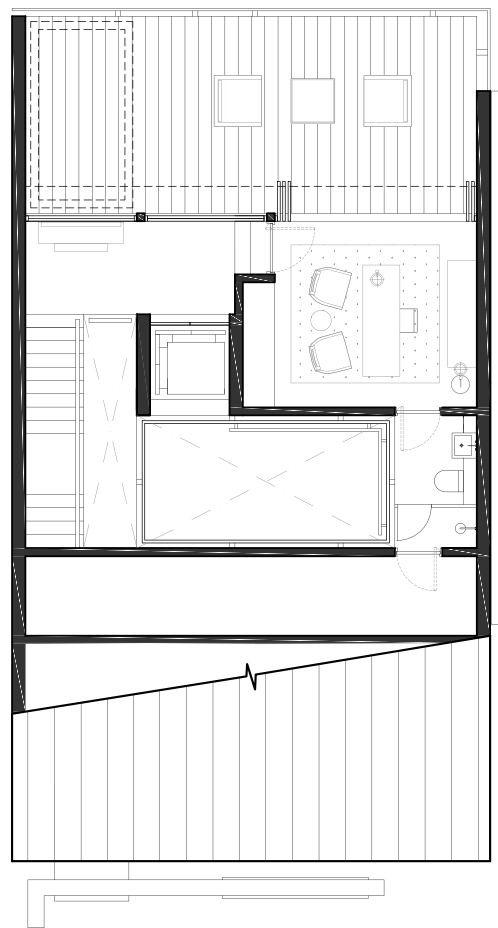
BASEMENT



1ST FLOOR

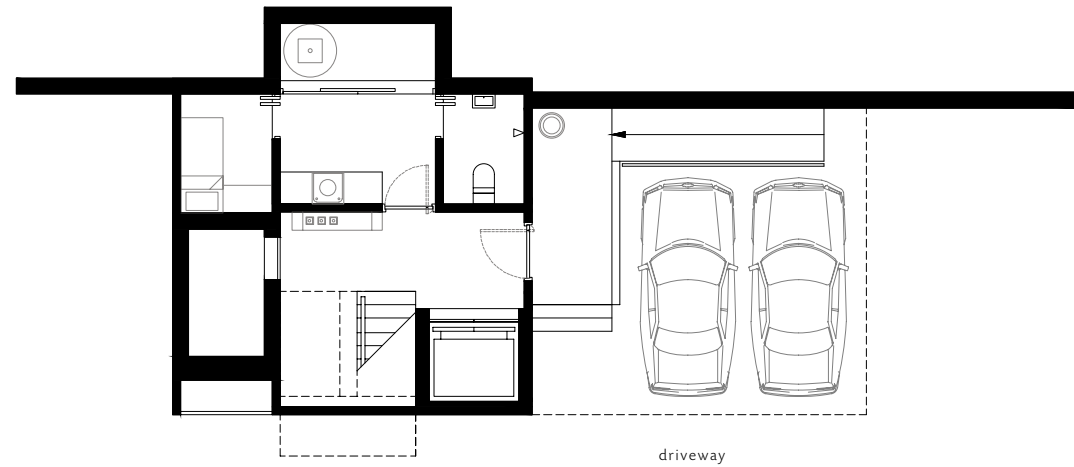


2ND FLOOR

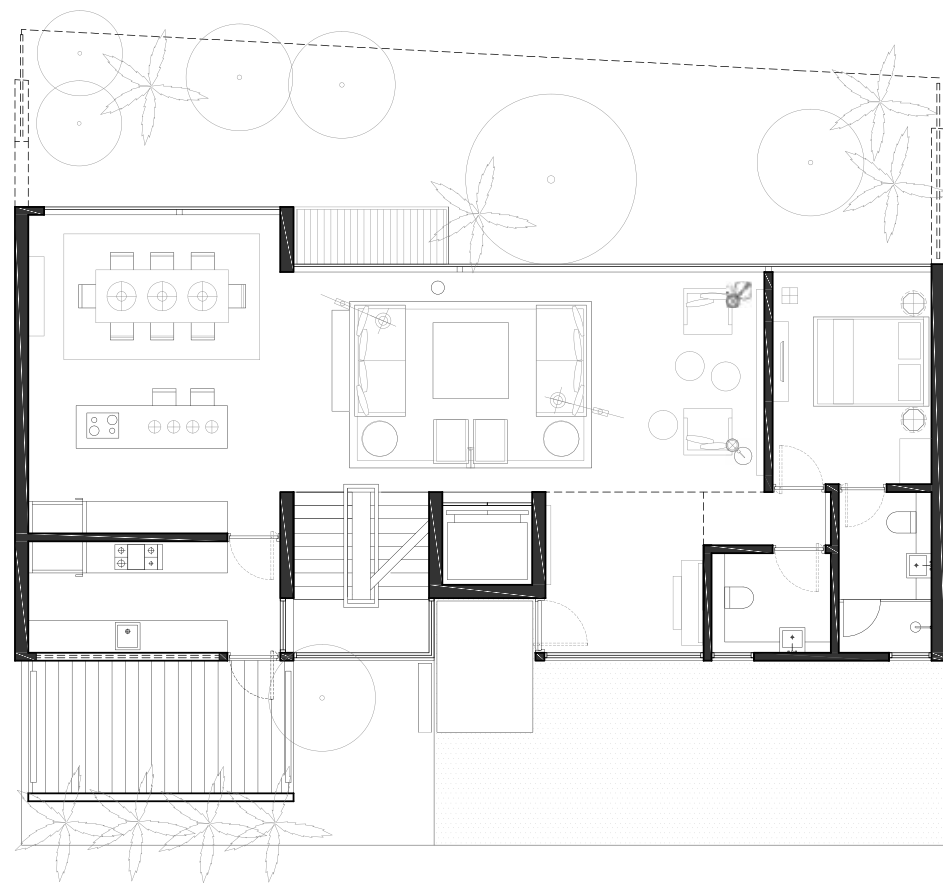


ATTIC

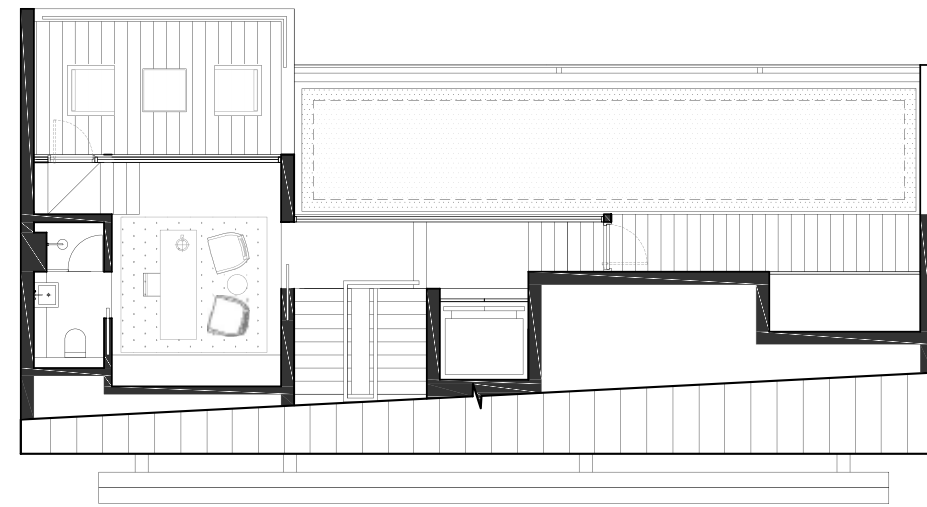
TYPE B2



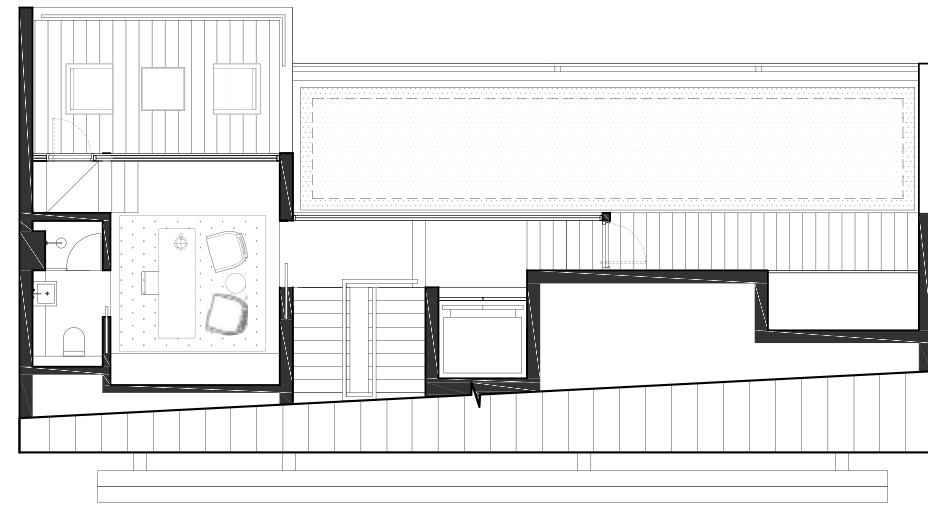
BASEMENT



1ST FLOOR



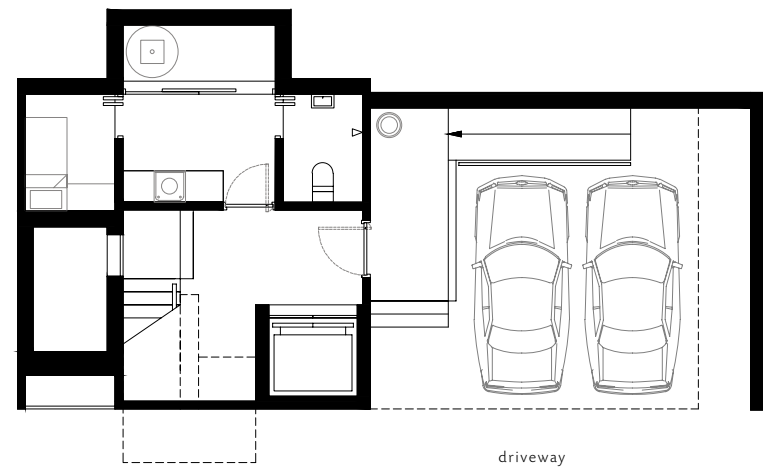
2ND FLOOR



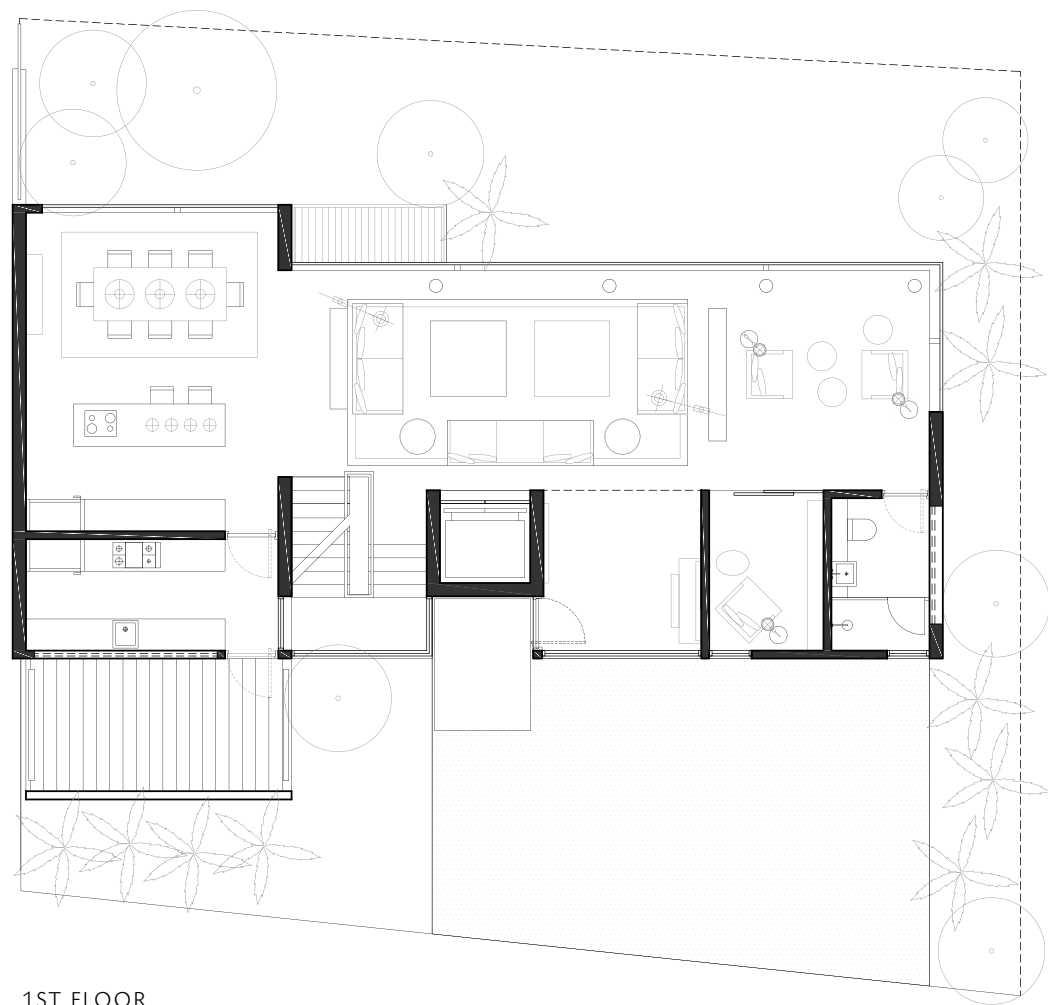
ATTIC

TYPE C1

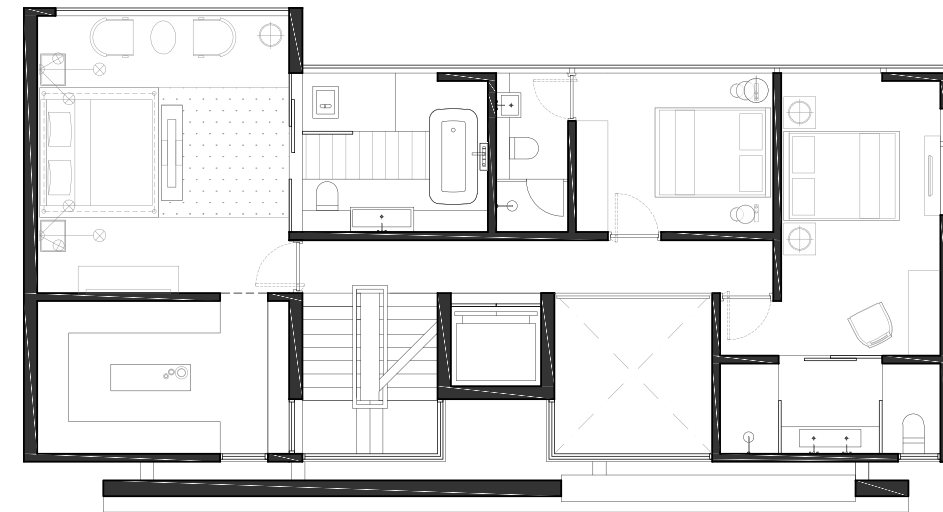




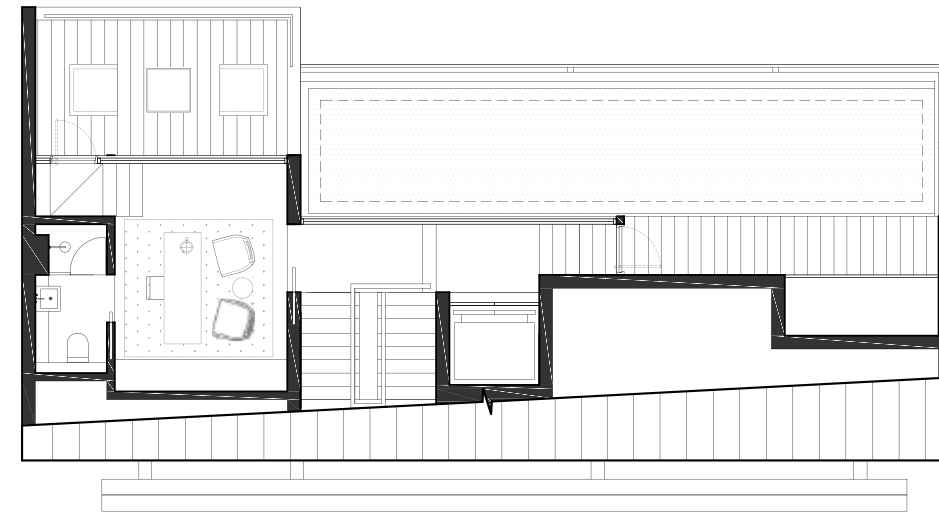
BASEMENT



1ST FLOOR



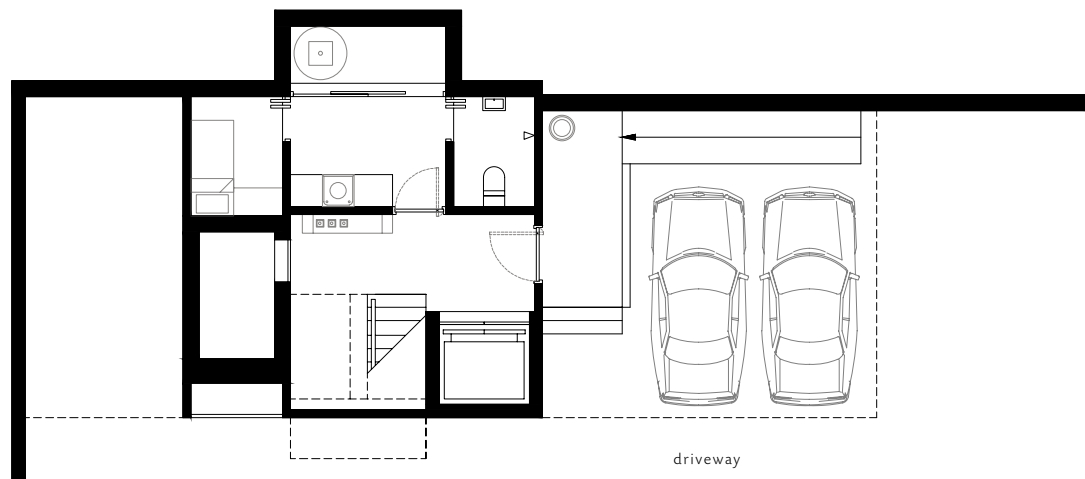
2ND FLOOR



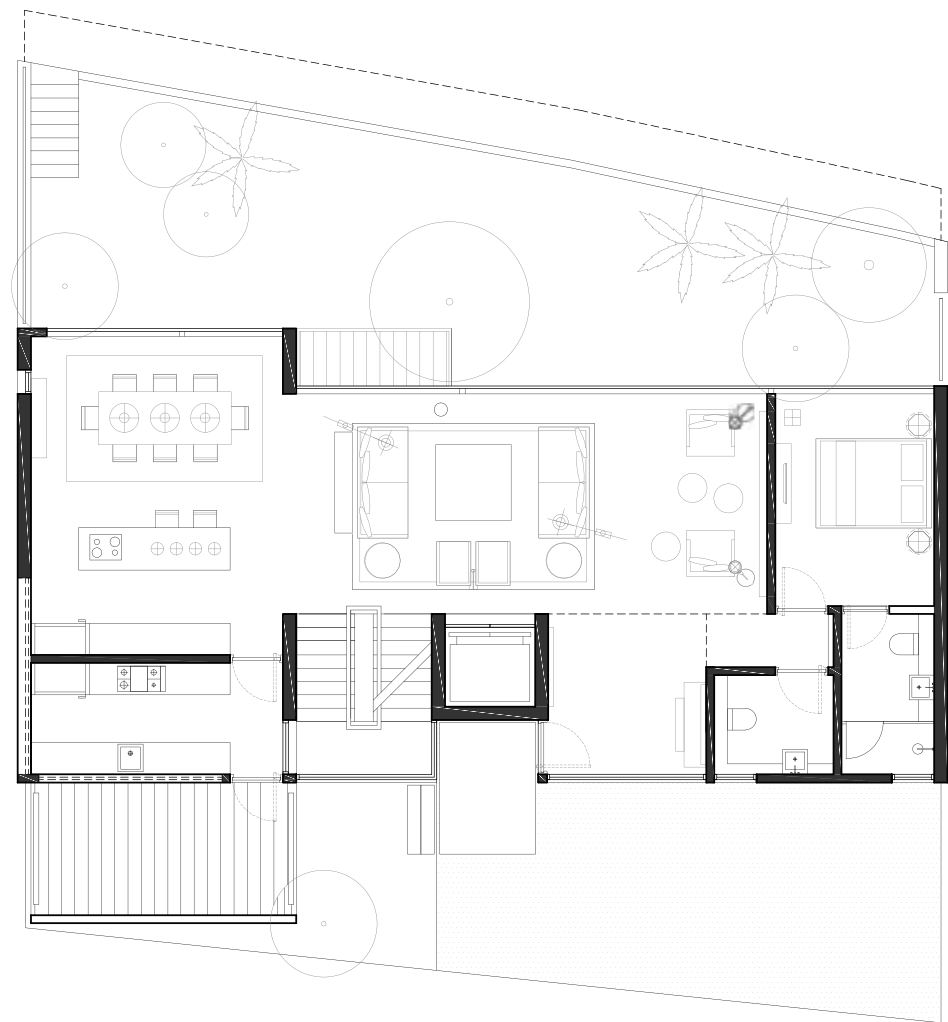
ATTIC

TYPE C2

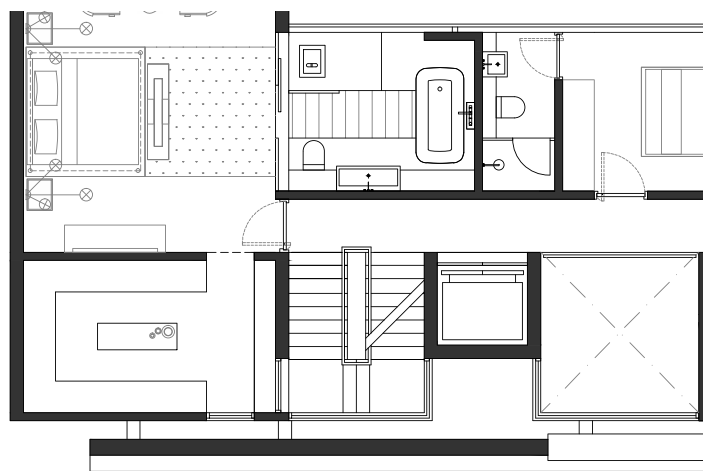




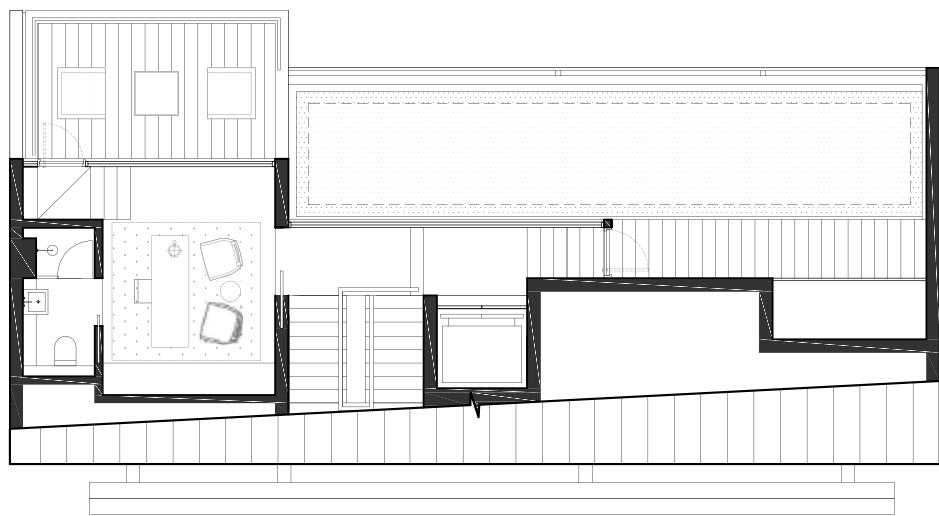
BASEMENT



1ST FLOOR



2ND FLOOR



ATTIC

TYPE C3



2013 SINGAPORE INSTITUTE OF ARCHITECTS AWARD WINNER

JURY CITATION

'...Creating differentiation in uniformity, the street façade is particularly distinctive. Quiet yet sharp, the design moves differentiate the design from others, where materiality and attention to detail come strongly into play. The tectonic precision and intent in each fold, incision, and the opening define clearly the architectural elements of each unit. With simple yet strong control of the repetitive cladding, the impact of small differentiation by staggering and subtle variation is pleasantly evident, and adds depth and interest to the development.

The contrast between the heavier road-facing front façade and the thin skin of full-height curtain walls in the side fronting the golf course creates interesting dialectics between the two ends of the dwelling, in response to its immediate context. In addition, the attention to details and material, from their change in scale of interior spaces and down to designing to a human scale, results in refined and comfortable interior spaces.

The jury is in full consensus that this development reads well as a cohesive whole, well integrated into its site and environment, and on a smaller scale, enjoyable and relevant to its users and inhabitants.'